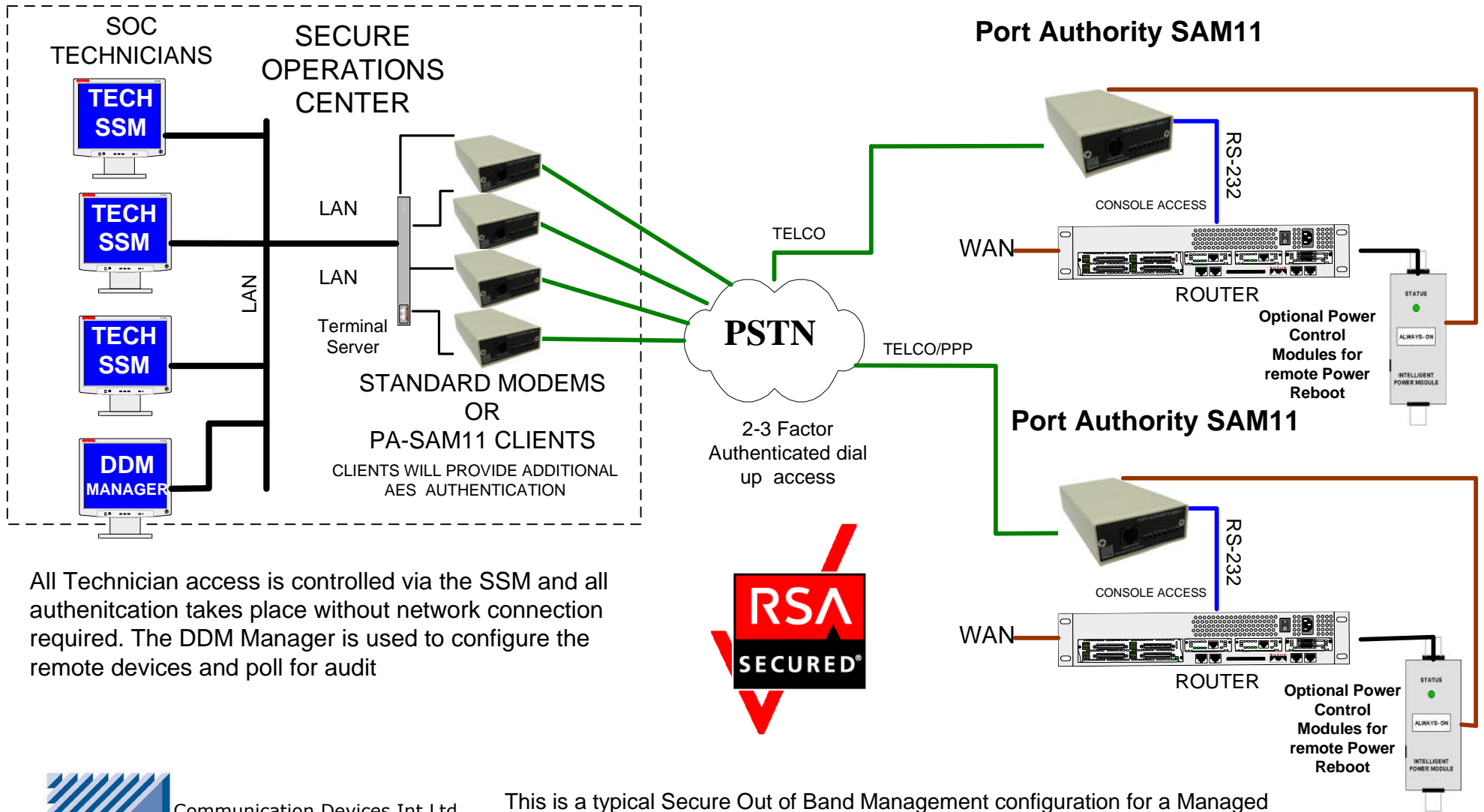


SECURE RSA OUT OF BAND MANAGEMENT OVER DIAL-UP



All Technician access is controlled via the SSM and all authentication takes place without network connection required. The DDM Manager is used to configure the remote devices and poll for audit



Communication Devices Int Ltd
 3 Eghams Court, Boston Drive
 Bourne End
 Bucks SL8 5YS UK
www.commsdevices.co.uk

This is a typical Secure Out of Band Management configuration for a Managed Security Provider. The PA-SAM11 is connected to the console port of a Router . The SOC technician can RSA dial-up to the PA-SAM11. This will then allow console access. At no time is the PA-SAM11 relying on network security to operate as the network is in question when the device is used.